

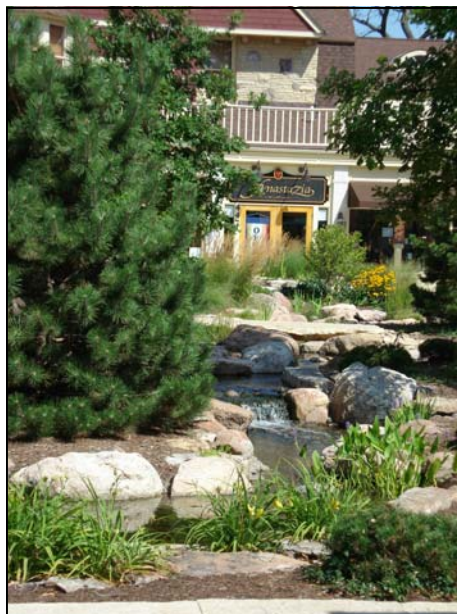
# Dodson Place

407 - 477 South Third Street, Geneva, Illinois



## Square Footage Available

1,256 - 18,684 s.f.



## Dodson Place Buildings 3-7

100,000 Square Feet

Dodson Place is Historic downtown Geneva's newest and most elegant shopping destinations. Boasting over 30 unique shops, restaurants and professional services, Dodson Place is the premier shopping experience in Geneva.

Dodson Place is built around the centerpiece, a historically restored community hospital, blending historic and modern architecture and stretching over four blocks on historic Third Street. The 130,000 square foot development, awarded best planned unit development project of Illinois, offers unique upscale stores, cafes, restaurants, wine cellars, professional services and upcoming residential living.

Conveniently located one block from the Geneva Metra Train Station, walk from the train or take I-88 west to Route 31 north into Geneva. Turn left at the stop light at Third Street.

### Demographic Comparison

#### Population (2006 Estimate)

1 Mile	19,515
3 Mile	55,886
5 Mile	101,563

#### Average Household Income

1 Mile	\$72,082
3 Mile	\$89,089
5 Mile	\$92,779

**SHODEEN**  
**MANAGEMENT**  
REAL ESTATE • LEASING • SALES • MANAGEMENT

**Shodeen Management**  
89 North First Street  
Geneva, IL 60134  
[www.shodeenmanagement.com](http://www.shodeenmanagement.com)

(630) 232-7883

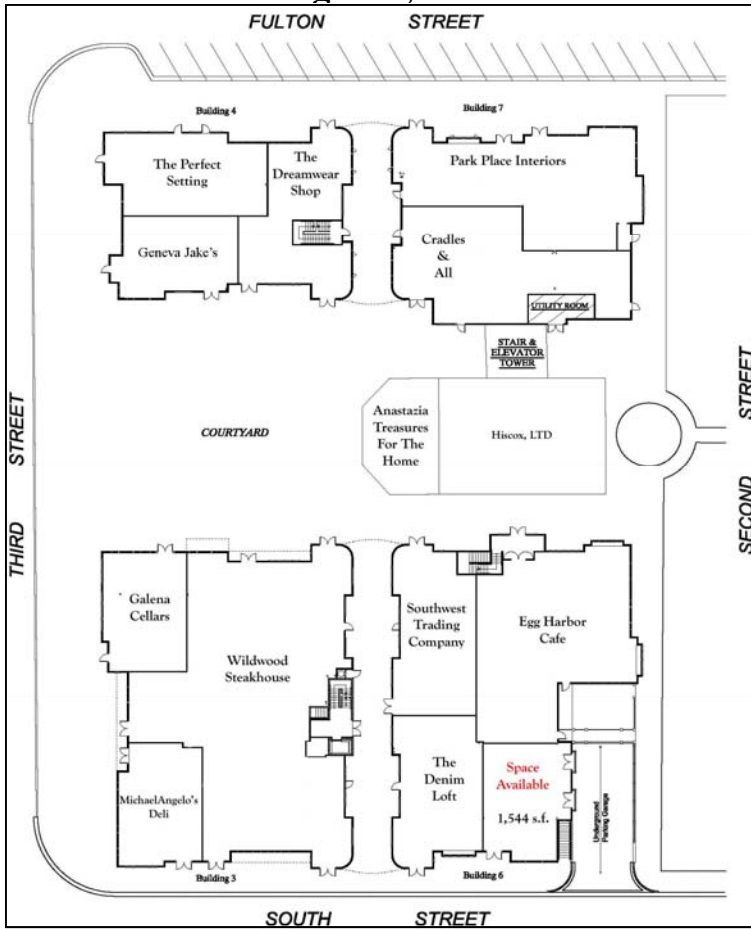
(630) 232-7895 fax



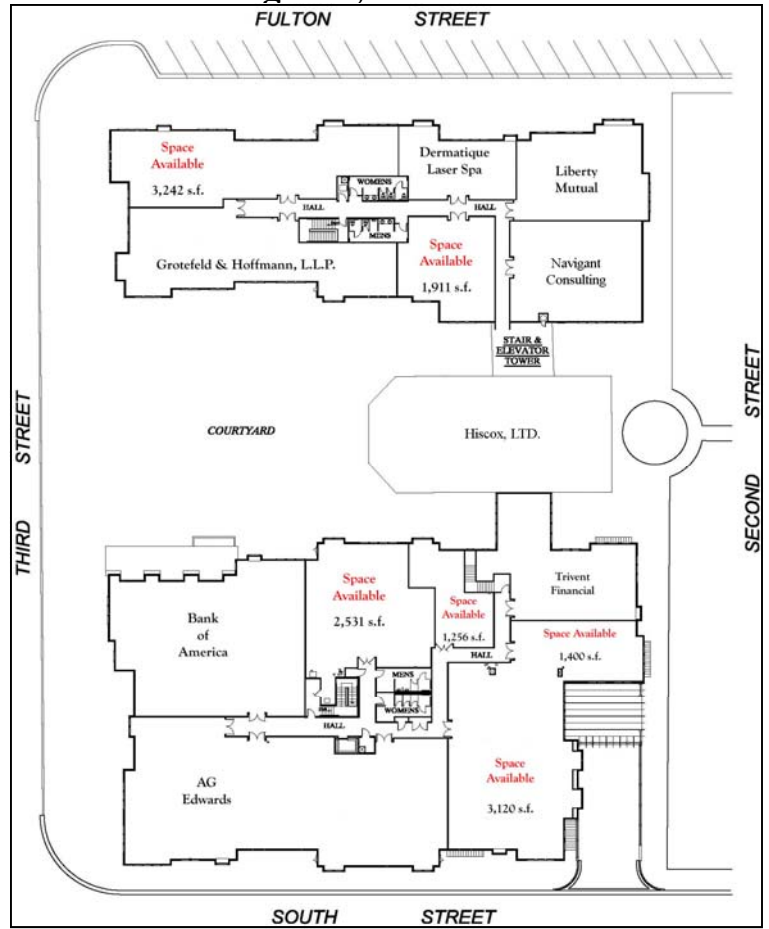
# Dodson Place

1,256 - 18,815 Square Feet Available  
 407 - 507 South Third Street, Geneva, Illinois 60134

## Buildings 3-7, First Floor



## Buildings 3-7, Second Floor



### Building # 3-6

Suite 100	Galena Cellars Winery	1,621 s.f.
Suite 118	Southwest Trading Company	2,092 s.f.
Suite 124	Egg Harbor Café	4,000 s.f.
Suite 142	Space Available	1,544 s.f.
Suite 148	The Denim Loft	1,965 s.f.
Suite 166	Wildwood Steakhouse	1,934 s.f.
Suite 184	Michael Angelos Deli	1,567 s.f.
Suite 190	Wildwood Steakhouse	5,946 s.f.
Suite 200	Bank of America	4,773 s.f.
Suite 210	Wachovia	8,210 s.f.
Suite 230	Space Available	2,531 s.f.
Suite 250	Space Available	3,120 s.f.
Suite 260	Space Available	1,256 s.f.
Suite 270	Space Available	1,400 s.f.
Suite 280	Trivent Financial	2,410 s.f.

### Building # 4-7

Suite 100	The Perfect Setting	2,078 s.f.
Suite 114	Park Place Interiors	3,546 s.f.
Suite 150	Cradles and All	3,190 s.f.
Suite 174	The Dreamwear Shoppe	2,080 s.f.
Suite 186	Geneva Jake's	1,370 s.f.
Suite 200	Grotefeld & Hoffmann	2,872 s.f.
Suite 220	Space Available	3,242 s.f.
Suite 230	Vankampen Assets	1,911 s.f.
Suite 240	Dematique Laser Spa	1,280 s.f.
Suite 250	Liberty Mutual	2,125 s.f.
Suite 260	Navigant Consulting	2,310 s.f.

### Building #5

416 S. Second	Hiscox, LTD	7,134 s.f.
447 S. Third	Anastazia	1,100 s.f.



## Shodeen Management

89 N 1st Street (630) 232-7883 - Phone  
 Geneva, IL 60134 (630) 232-7895 - Fax

<http://www.shodeenmanagement.com>